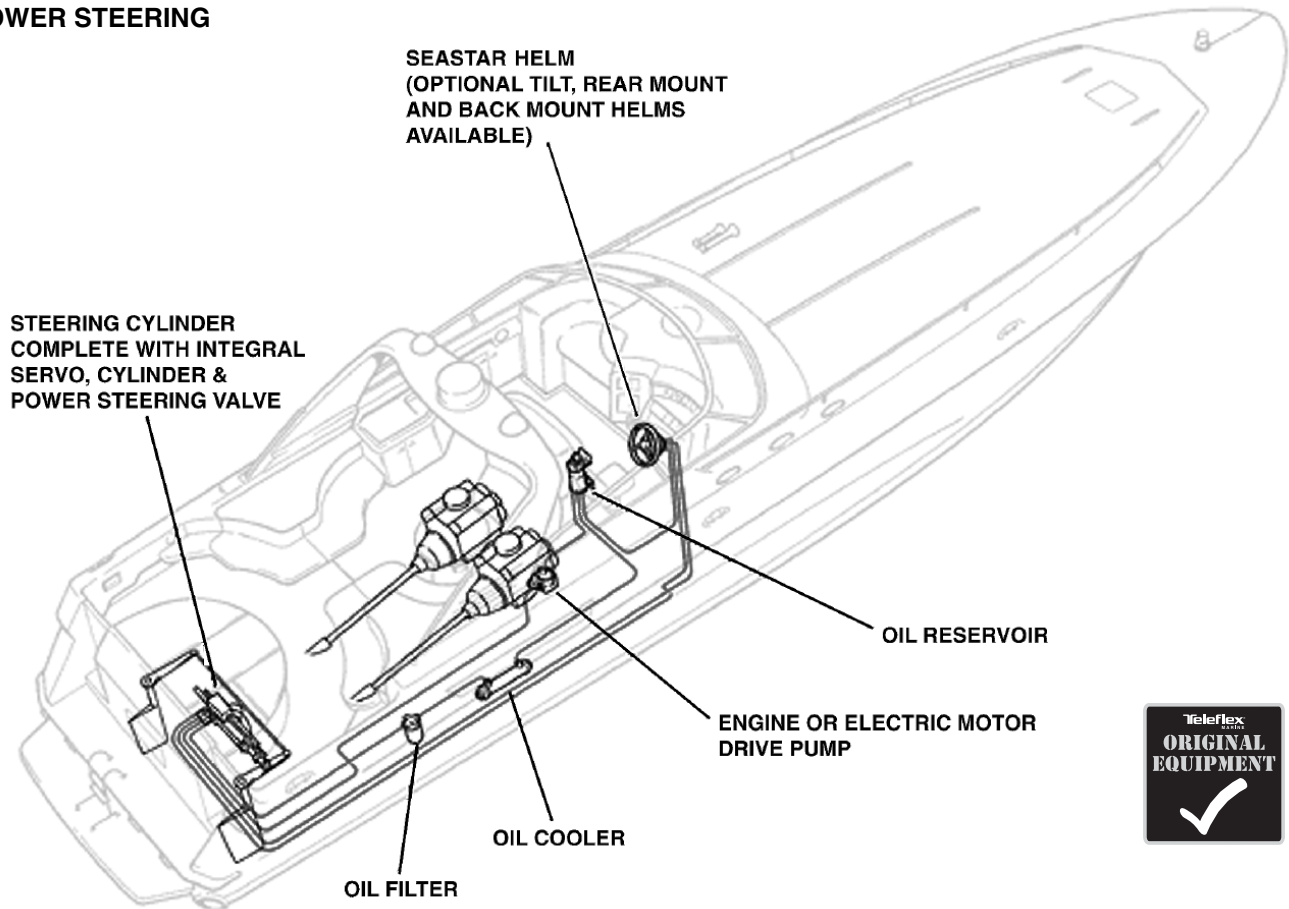


# SeaStar inboard power steering

## SeaStar® POWER STEERING

## Our Best Steering System!

SEASTAR® INBOARD  
POWER STEERING



DIMENSIONS: pg. 139, 160-161  
HOW TO SPEC: page 139  
SERVICE PARTS: pages 148-151  
SUPPORT: [www.teleflexmarine.com](http://www.teleflexmarine.com)  
or call 604-270-6899

**NOTE:** When properly installed, this steering system will connect to inboard engines using appropriate engine/rudder connection hardware.

*Steering today's high horsepower luxury yachts and commercial craft all too often challenges physical endurance and cruising enjoyment on the water.*

*SeaStar Power Steering provides the ultimate in comfort, simplicity, safety and reliability.*

*Superior design and manufacturing deliver an outstanding, rugged product — in the SeaStar tradition.*

*(3.5 turns lock-to-lock)  
(or user's preference, depending on helm selected)*

hydraulic inboard power steering, boats to 70 feet and up

## Applications:

Vessels up to to 120 feet (planing hulls using twin 2.5" bore cylinders).



## Features:

- Effortless steering at any speed.
- Responsive 3-1/2 turns lock-to-lock. (Number of turns can be varied by helm.)
- Multiple steering stations can be installed.
- Compact helm has only a 4-7/16" footprint — needs only 3" dash hole.
- Tilt Steering available (requires larger dashboard hole).
- Standard 3/4" tapered steering shaft (1" straight or tapered versions available).
- Simplified installatio.
- Easy autopilot interface.
- Automatic manual back-up steering.
- Meets A.B.Y.C./N.M.M.A. standards.

## How to Spec a System:

1. Vessel size and hull type determine the kind of cylinder required. (All boats over 70 feet in length should have steering loads reviewed by Teleflex Canada.)
2. Engine type determines which power steering pump should be used. If in doubt, contact Teleflex Canada.
3. A SeaStar 1.7 helm is recommended; this will result in a system with 3-1/2 wheel turns lock-to-lock when 9" stroke cylinders are used. If a different number of wheel turns is desired, contact Teleflex Canada for recommended helm to achieve desired number of steering wheel turns.

## How it Works:

SeaStar hydraulic power steering uses the ship's engine(s) to provide the "power" for the steering system, via a mechanically or electric motor driven hydraulic pump.

A manual hydraulic steering system, consisting of a standard SeaStar helm and a hydraulic steering cylinder (fitted with an integral servo cylinder and a power steering valve), supplies the "control" portion of the steering system.

Under normal conditions, with engines running, a hydraulic oil supply is in a stand-by mode, ready to be directed to the steering cylinder as dictated by the steering wheel, servo cylinder and power steering valve.

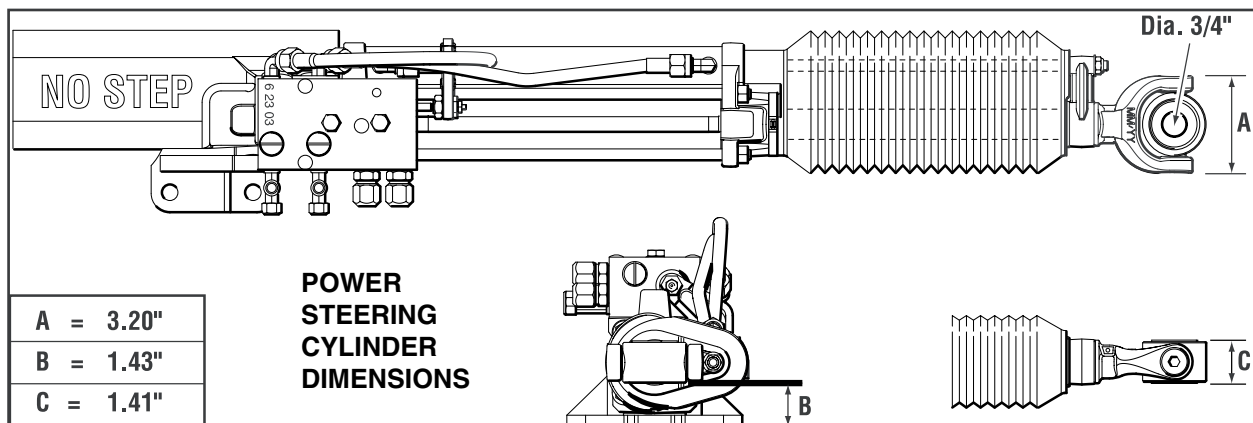
Turning the steering wheel left or right makes the system go from "stand-by" into "operating" mode and move the steering cylinder accordingly.

In the event of a power source failure, hydraulic oil from the steering helm is automatically diverted into the servo and steering cylinder, providing the helmsman with manual back-up steering.

An engine room mounted oil reservoir allows easy fill and assists the in-line cooler in cooling the hydraulic oil.

An in-line oil filter helps to protect the steering system components against contaminants.

**NOTE:** If you have any questions, please contact Teleflex (Canada) Tech Service at [www.teleflexmarine.com](http://www.teleflexmarine.com) or FAX us at (604) 270-7172.



# SeaStar inboard power steering

## Complete Systems:

See application and ordering guides to select appropriate components.

## Components:

### HELM:

SeaStar 1.7 Standard Mount Helm....HH5271 *or*

SeaStar 1.7 Rear Mount Helm .....HH5261 *or*

SeaStar 1.7 Tilt.....HH5741 *or*

SeaStar 1.7 Rear Mount, 1" Shaft .....HH5281

*(Several other helm displacements are available to vary the number of steering wheel turns from lock-to-lock. Several helm options are available including Tilt, rear mount and kits which reduce front mount helm protrusion from the dash.)*

### CYLINDER:

Cylinder-power steering (primary) .....HC58\_\_

Cylinder-power steering (additional).....HC58\_\_

*(1 or 2 required. See Application Guide on following pages.)*

### OIL COOLERS:

Oil Cooler (2.25 Kw, 1" Water Lines) ..... HP5825

Oil Cooler (6.25 Kw, 2" Water Lines) ..... HP5826

### OIL RESERVOIR & FILTER:

Oil Reservoir..... HP5810

Oil Filter ..... HP5815

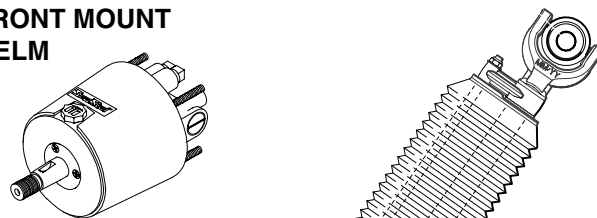
### HOSE/TUBING:

Hose/Tubing for Manual Circuit ..... 5/16" I.D.†

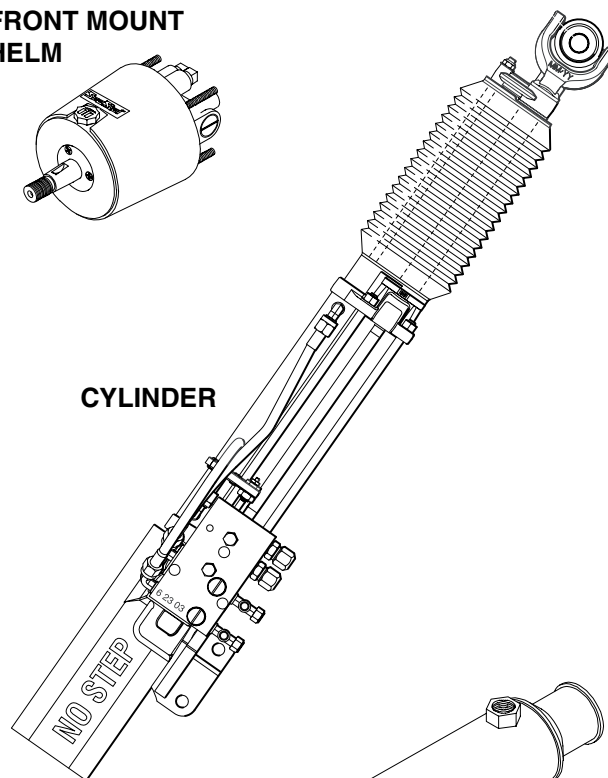
† If using 1/4" I.D. tube, runs should be short and SeaStar oil must be used.

Hose/Tubing for Power Circuit.....100R1 type

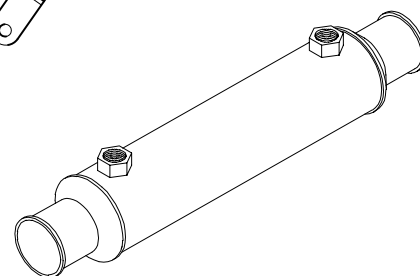
FRONT MOUNT  
HELM



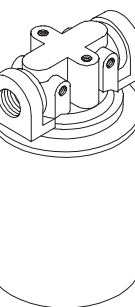
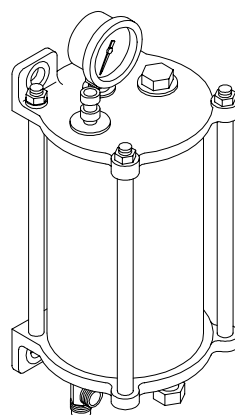
CYLINDER



OIL  
COOLER

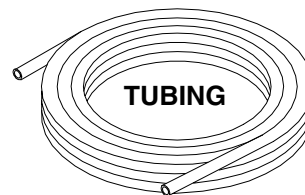


RESERVOIR



FILTER

TUBING



hydraulic inboard power steering, boats to 70 feet and up

**PUMPS:**

Outlet Check Power Pump ..... HP5820

Pressure Relief Twin Pump ..... HP5822

***Pumps — Right-Hand Rotation:***

Pump—Belt Drive, Right Rotation  
(Universal) ..... HP5830

Pump—Keyed Shaft, Right Rotation ..... HP5848

Pump—Keyed Shaft, Direct Drive,  
Right Rotation (Detroit Diesel)..... HP5832

Pump—Keyed Shaft, Direct Drive,  
Right Rotation (2 GPM) ..... HP5834

Pump—Direct Drive, Right Rotation  
(No Flow Control) ..... HP5836

Pump—Splined Shaft, Direct Drive,  
Right Rotation (Caterpillar).....HP5833\*  
*(\*Special Order — please consult Teleflex Canada.)*

Pump—6-tooth (B Flange) Splined Shaft,  
Direct Drive, Right Rotation)..... HP5844

Pump—9-tooth Splined Shaft, Direct Drive,  
Right Rotation..... HP5837

Pump—9-tooth Splined Shaft, Direct Drive,  
Right Rotation..... HP5839

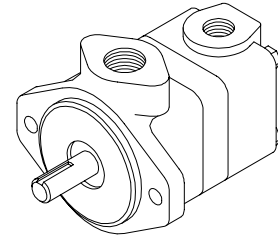
Pump—9-tooth Splined Shaft, Direct Drive,  
Right Rotation..... HP5846

Pump—11-tooth Splined Shaft, Direct Drive,  
Right Rotation..... HP5838

Pump—11-tooth Splined Shaft, Direct Drive,  
Right Rotation..... HP5847

Pump—13-tooth Splined Shaft, Direct Drive,  
Heavy Duty Right Rotation (Twin Disc)... HP5835

**PUMP  
(HP5832  
SHOWN)**



***Pumps — Left-Hand Rotation:***

Pump—Belt Drive, Left Rotation  
(Universal) ..... HP5831

Pump—Keyed Shaft, Right Rotation ..... HP5850

Pump—Direct Drive,  
Left Rotation ..... HP5841

Pump—9-tooth Splined Shaft, Direct Drive,  
Left Rotation ..... HP5843

Pump—9-tooth Splined Shaft, Direct Drive,  
Left Rotation ..... HP5845

Pump—11-tooth Splined Shaft, Direct Drive,  
Left Rotation ..... HP5840

Pump—11-tooth Splined Shaft, Direct Drive,  
Left Rotation ..... HP5842

Pump—11-tooth Splined Shaft, Direct Drive,  
Left Rotation ..... HP5849

Pump—11-tooth Splined Shaft, Direct Drive,  
Left Rotation ..... HP5852

**FLUID:**

SeaStar Oil (1 Gallon) .....HA5440‡ or

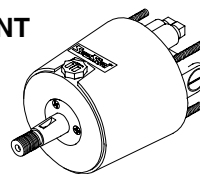
Capilano Steering Fluid .....Dexron II® ATF‡  
‡ Use SeaStar fluid [Mil spec H-5606C] with SeaStar 1.4, 1.7, 2.0  
& 2.4 helms or Dexron II® type ATF if using SeaStar Capilano  
1250V/1275V helms.

# SeaStar inboard power steering

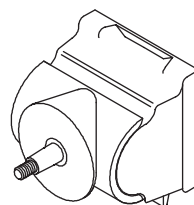
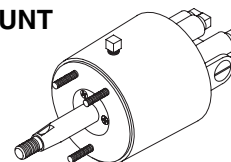
## MISCELLANEOUS:

- Outlet Check Valve (Power Pump) ..... HP5820
- Auto Flow Control (Twin Pump)..... HP5821
- Crossover Pressure Relief..... HP5822
- System Pressure Gauge Kit ..... HA5821
- Adapter Kit, Twin Disc #5050 ..... HA5823
- Adapter Kit, Twin Disc #5061 ..... HA5824
- Adapter Kit, MAN to V10 Pump ..... HA5827
- Tiller Bolt Kit (stainless steel) ..... HA5819
- Pressure Relief Valve  
(1250psi setting) ..... HP5818  
*(Required in a system where the power pump DOES NOT have a built in pressure relief valve. ALL SeaStar Power Pumps have built in pressure relief valves.)*

## FRONT MOUNT HELM

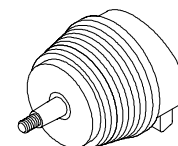


## REAR MOUNT HELM



## TRADITIONAL TILT HELM & MECHANISM

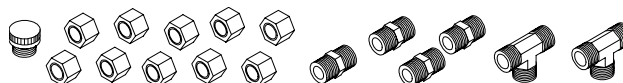
## SPORT TILT HELM & MECHANISM



## Helm Options:

Add-A-Station/Autopilot Fittings Kit ..... HF5502  
*(1 required for each additional station or autopilot interface.)*

## HF5502



Helm Remote Fill Kit (through-dash) ..... HA5450  
*(Allows relocation of your SeaStar helm fill to either a more convenient or a more concealed location. This kit can be used with ALL SeaStar helms.)*

## 1.4 HELMS (4.3 WHEEL TURNS WITH 9" STROKE CYLINDER):

- SeaStar 1.4 Front Mount Helm..... HH5269  
*(Above helm has 3/4" tapered shaft.)*
- SeaStar 1.4 Rear Mount Helm ..... HH5260  
*(Above helm has 3/4" tapered shaft.)*
- SeaStar 1.4 Rear Mount Helm ..... HH5280  
*(Above helm has 1" tapered shaft.)*
- SeaStar 1.4 Rear Mount Helm ..... HH5279  
*(Above helm has 1" straight shaft.)*
- SeaStar 1.4 Sport Tilt Helm/Mech. .... HH5744  
*(Above helm has 3/4" tapered shaft.)*

## 1.7 HELMS (3.5 WHEEL TURNS WITH 9" STROKE CYLINDER):

- SeaStar 1.7 Front Mount Helm..... HH5271
- SeaStar 1.7 Rear Mount Helm ..... HH5261  
*(Above helm has 3/4" tapered shaft.)*
- SeaStar 1.7 Rear Mount Helm ..... HH5281  
*(Above helm has 1" tapered shaft.)*
- SeaStar 1.7 Sport Tilt Helm/Mech. .... HH5291  
*(Above helm has 3/4" tapered shaft.)*
- SeaStar 1.7 Traditional Tilt Helm/Mech. HH5741  
*(Above helm has 3/4" tapered shaft.)*
- SeaStar 1.7 Commercial Duty Helm..... HH5217  
*(3/4" tapered shaft. Designed for small Lobster and Crabbing vessels, these helms have a stainless steel shaft with heavy duty seal and wiper, which help protect the helm from the abrasive effects of sediment brought on board with traps or pots.)*

hydraulic inboard power steering, boats to 70 feet and up

**2.0 HELMS (3.0 WHEEL TURNS WITH 9" STROKE CYLINDER):**

SeaStar 2.0 Front Mount Helm..... HH5273  
*(Above helm has 3/4" tapered shaft.)*

SeaStar 2.0 Sport Tilt Helm/Mech. .... HH5745  
*(Above helm has 3/4" tapered shaft.)*

SeaStar 2.0 Traditional Tilt Helm/Mech. HH5743  
*(Above helm has 3/4" tapered shaft.)*

**2.4 HELMS (2.5 WHEEL TURNS WITH 9" STROKE CYLINDER):**

SeaStar 2.4 Front Mount Helm..... HH5272  
*(Above helm has 3/4" tapered shaft.)*

SeaStar 2.4 Rear Mount Helm ..... HH5262  
*(Above helm has 3/4" tapered shaft.)*

SeaStar 2.4 Sport Tilt Helm/Mech. .... HH5292  
 SeaStar 2.4 Traditional Tilt Helm/Mech. HH5742

SeaStar 2.4 Commercial Duty Helm..... HH5224  
*(Designed for small Lobster and Crabbing vessels, these helms have a stainless steel shaft with heavy duty seal and wiper, which help protect the helm from the abrasive effects of sediment brought on board with traps or pots.)*

**CAPILANO HELM (1.8-3.5 WHEEL TURNS WITH 9" STROKE CYLINDER):**

Capilano 1250V Helm..... HH5250

**SEASTAR FRONT MOUNT HELM MOUNTING OPTION KITS:**

SeaStar Round Bezel Kit..... HA5417  
*(Reduces helm protrusion by 3.75")*

SeaStar Backplate Kit..... HA5418  
*(Reduces helm protrusion by thickness of dash and allows clean retrofit of SeaStar helm where pre-1991 SeaStar helms were previously installed.)*

SeaStar 20° Dash Wedge Kit ..... HA5419

SeaStar Helm Fill Kit ..... HA5438  
*(Includes hose with screw cap which fits SeaStar or equivalent oil bottles. Also includes push pin for venting/resealing bottle. Allows for clean bleed when used properly.)*

*Service Items:*

SeaStar Power Steering Purge Kit ..... HA5456  
*(25' hose to connect steering cylinder to reservoir for bleeding.)*

SeaStar Power Steering Purge Kit ..... HA5457  
*(Central bleeding location — no need to run hoses to reservoir. Can only be used with Power Steering Cylinders made after October, 2005.)*

SeaStar Oil (1 Gallon) ..... HA5440

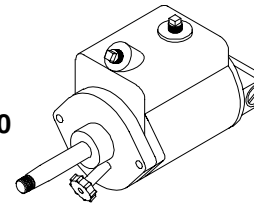
SeaStar Oil (1 Quart)..... HA5430

Steering Wheel Locknut ..... 747521

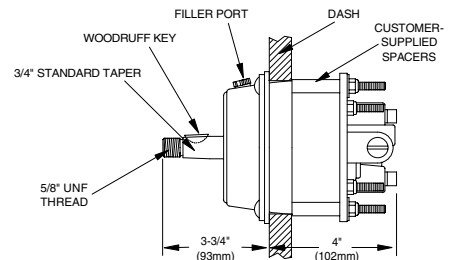
747521



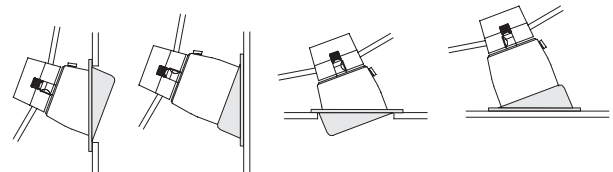
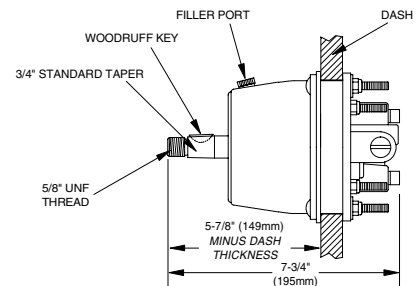
HH5250



**HA5417 ROUND BEZEL KIT**



**HA5418 BACK PLATE KIT**



**HA5419 20° DASH WEDGE KIT**

SEASTAR POWER STEERING

# SeaStar inboard power steering

## Application Guide: Power Steering Cylinders

The chart below is only a guide to selecting a steering system. A steering system maker cannot anticipate all the variables in boat-rudder design that affect steering loads. It is the final responsibility of the boat designer/builder to specify maximum expected steering loads. If the required information is not available, contact

customer service with rudder dimensions, vessel size and anticipated maximum speed. Boats over 70 feet should have steering loads reviewed by Teleflex Canada. Call 604-270-6899 or go on-line at [www.teleflexmarine.com](http://www.teleflexmarine.com).

### Definitions of terms used in the chart:

**Planing Hull:** maximum hull speed normally exceeds 18 knots;

**Displacement Hull:** maximum hull speed does not normally exceed 18 knots.

SEASTAR POWER STEERING

FOR VESSEL SIZES UP TO:	STEEERING HELM PUMP MODEL	WHEEL TURNS Lock to Lock	REQUIRES CYLINDER PART NUMBER(S) (stroke, bore ")	RECOMMENDED TUBING/HOSE DIAMETERS		MAXIMUM OUTPUT TORQUE	
				Power Circuit	Manual Circuit	In.-Lb.	Nm
<b>PLANING HULLS:</b>							
up to 65' (20m)	SeaStar 1.7	3.5	HC5801-2 (9" 1.0")	100R1	5/16"	18,900	2,130
up to 75' (23m)	SeaStar 1.7	4.25	HC5803-2 (11" 1.0")	100R1	5/16"	23,140	2,610
up to 85' (26m)	SeaStar 1.7	3.5	HC5801-2 +HC5802 (9" 2.0")	100R1	5/16"	37,800	4,260
up to 100' (31m)	SeaStar 1.7	4.25	HC5803-2 + HC5804 (11" 2.0")	100R1	5/16"	46,280	5,220
up to 110' (34m)	SeaStar 1.7	3.5	HC5805 (9" 2.5")	100R1	5/16"	33,065	3,736
up to 120' (37m)	SeaStar 1.7	3.5	HC5805 + HC5806 (9" 2.5")	100R1	5/16"	66,130	7,472
<b>DISPLACEMENT HULLS (STANDARD):</b>							
up to 50' (15m)	SeaStar 1.7	3.5	HC5801-2 (9" 1.0")	100R1	5/16"	18,900	210
up to 60' (18m)	SeaStar 1.7	4.25	HC5803-2 (11" 1.0")	100R1	5/16"	23,140	260
up to 75' (22m)	SeaStar 1.7	3.5	HC5801-2 +HC5802 (9" 2.0")	100R1	5/16"	37,800	420
up to 85' (26m)	SeaStar 1.7	4.25	HC5803-2 + HC5804 (11" 2.0")	100R1	5/16"	46,280	520
up to 100' (31m)	SeaStar 1.7	3.5	HC5805 (9" 2.5")	100R1	5/16"	33,065	3,736
up to 110' (34m)	SeaStar 1.7	3.5	HC5805 + HC5806 (9" 2.5")	100R1	5/16"	66,130	7,472
<b>DISPLACEMENT HULLS (HEAVY DUTY):</b>							
up to 40' (12m)	SeaStar 1.7	3.5	HC5801-2 (9" 1.0")	100R1	5/16"	18,900	210
up to 50' (15m)	SeaStar 1.7	4.25	HC5803-2 (11" 1.0")	100R1	5/16"	23,140	260
up to 55' (17m)	SeaStar 1.7	3.5	HC5801-2 +HC5802 (9" 2.0")	100R1	5/16"	37,800	420
up to 60' (18m)	SeaStar 1.7	4.25	HC5803-2 + HC5804 (11" 2.0")	100R1	5/16"	46,280	520
up to 70' (22m)	SeaStar 1.7	3.5	HC5805 (9" 2.5")	100R1	5/16"	33,065	3,736
up to 80' (25m)	SeaStar 1.7	3.5	HC5805 + HC5806 (9" 2.5")	100R1	5/16"	66,130	7,472

**NOTE:** Theoretical torque about pivot point at 35 degrees articulation with 1,000 PSI (70 BAR) system pressure.

## Power Steering Cylinder Specifications:

CYLINDER MODEL	PART NUMBER	BORE DIAMETER	NOMINAL SHAFT		VOLUME	OUTPUT FORCE	TORQUE (SEE NOTE)
		Inches (mm)	DIAMETER Inches (mm)	STROKE Inches (mm)	CUBIC IN. (cc)	Ft.-Lbs. (N)	In.-Lb. (Nm)
SINGLE 9" STROKE x1	HC5801-2	2.00 (51)	1.00 (25.4)	9 (229)	21.25 (348)	2,946 (13090)	18,900 (2,130)
SINGLE 11" STROKE x1	HC5803-2	2.00 (51)	1.00 (25.4)	11 (280)	25.9 (425)	2,946 (13090)	23,140 (2,610)
SINGLE 9" STROKE x1	HC5805-2	2.50 (64)	1.00 (25.4)	9 (229)	37.11 (608)	5,154 (22926)	33,065 (3,736)
TWIN 9" STROKE x2	HC5802	2.00 (51)	1.00 (25.4)	9 (229)	42.50 (697)	5,892 (26,190)	37,800 (4,260)
TWIN 11" STROKE x2	HC5804	2.00 (51)	1.00 (25.4)	11 (280)	51.80 (850)	5,892 (26,190)	46,280 (5,220)
TWIN 9" STROKE x2	HC5806	2.50 (64)	1.00 (25.4)	9 (229)	74.33 (1216)	10,308 (45,852)	66,130 (7,472)

**NOTE:** Theoretical torque about pivot point at 35 degrees articulation with 1,000 PSI (70 BAR) system pressure.

hydraulic inboard power steering, boats to 70 feet and up

## Helm Options:

Most SeaStar/Capilano helms can be used with SeaStar Power Steering systems, offering a wide choice of steering response. In addition, SeaStar helms offer a variety of options, including Tilt Steering and behind-the-dash mounting. (SeaStar PS and Capilano helms are available in rear mount versions only and cannot be equipped for Tilt Steering.)

HELM TYPE	DISPLACEMENT PER WHEEL TURN	NUMBER OF WHEEL TURNS	
		9" stroke cylinder	11" stroke cylinder
SeaStar 1.4	1.4 cu.in. (22.9 cc)	4.3	5.2
SeaStar 1.7	1.7 cu.in. (27.8cc)	3.5	4.25
SeaStar 2.0	2.0 cu.in. (33.0cc)	3.0	3.7
SeaStar 2.4	2.4 cu.in. (39.3cc)	2.5	3.0
Cap. 1250V	1.7-3.4 cu.in. (27.8-55.7cc)	1.75-3.5	2.1-4.25

## Ordering Guide: SeaStar Power Steering

ENGINE/CYLINDER CONFIGURATION	COMPONENT DESCRIPTION	QTY. REQ'D	MODEL	PART NO.
<b>SINGLE CYLINDER APPLICATIONS</b>	CYLINDER	1	SEE APPLICATION GUIDE	HC58__
	FRONT MOUNT HELM	1	SEASTAR 1.7	HH5271
<b>NUMBER OF TURNS:</b>	POWER STEERING PUMP	1	SEE APPLICATION GUIDE	HP583_
<b>3.5 (9" stroke cylinder)</b>	OIL RESERVOIR	1	SEASTAR	HP5810
<b>4.25 (11" stroke cylinder)</b>	OIL COOLER	1	2.25Kw, 1" WATER LINES	HP5825
	OIL COOLER (OPTIONAL, HEAVY DUTY)		6.25Kw, 2" WATER LINES	HP5826
<i>(For different number of turns, or Tilt Steering helms, refer to the Optional Equipment list below.)</i>	OIL FILTER	1	SEASTAR	HP5815
	TUBING/HOSE (POWER CIRCUIT)		100R1 TYPE	
	TUBING/HOSE (MANUAL CIRCUIT)		5/16" I.D.	
	OIL	2	SEASTAR OIL (GAL.)*	HA5440
<b>TWIN CYLINDER APPLICATIONS</b>	CYLINDER	1	SEE APPLICATION GUIDE	HC58__
	CYLINDER (SECOND)	1	SEE APPLICATION GUIDE	HC58__
<b>NUMBER OF TURNS:</b>	FRONT MOUNT HELM	1	SEASTAR 1.7	HH5271
<b>3.5 (9" stroke cylinder)</b>	POWER STEERING PUMP	1	SEE APPLICATION GUIDE	HP583_
<b>4.25 (11" stroke cylinder)</b>	OIL RESERVOIR	1	SEASTAR	HP5810
	OIL COOLER	1	2.25Kw, 1" WATER LINES	HP5825
	OIL COOLER (OPTIONAL, HEAVY DUTY)		6.25Kw, 2" WATER LINES	HP5826
<i>(For different number of turns, or Tilt Steering helms, refer to the Optional Equipment list below.)</i>	OIL FILTER	1	SEASTAR	HP5815
	TUBING/HOSE (POWER CIRCUIT)		100R1 TYPE	
	TUBING/HOSE (MANUAL CIRCUIT)		5/16" I.D.	
	OIL	2	SEASTAR OIL (GAL.)*	HA5440
<b>FOR EXTRA STEERING STATION, ADD:</b>	HELM	1	SEASTAR 1.7	HH5271
	FITTING KIT	1	ADD A STATION	HF5502
	EXTRA TUBING/HOSE (MANUAL CIRCUIT)		5/16" I.D.	
	OIL	1	SEASTAR OIL (QT.)*	HA5430
<b>OPTIONAL EQUIPMENT</b>	ROUND BEZEL KIT		(FRONT MOUNT HELMS)	HA5417
	BACK PLATE KIT		(FRONT MOUNT HELMS)	HA5418
	20 DEGREE WEDGE		(FRONT MOUNT HELMS)	HA5419
	AUTOPILOT FITTING KIT		(ALL HELMS)	HF5502
<b>(# TURNS: 4.3 or 5.2)</b>	REAR MOUNT HELM		SEASTAR 1.4	HH5260
<b>(# TURNS: 3.5 or 4.25)</b>	SPORT TILT HELM		SEASTAR 1.7	HH5291
<b>(# TURNS: 3.5 or 4.25)</b>	TRADITIONAL TILT HELM		SEASTAR 1.7	HH5741
<b>(# TURNS: 3.5 or 4.25)</b>	REAR MOUNT HELM		SEASTAR 1.7	HH5261
<b>(# TURNS: 3.0 or 3.7)</b>	FRONT MOUNT HELM		SEASTAR 2.0	HH5273
<b>(# TURNS: 2.5 or 3.0)</b>	SPORT TILT HELM		SEASTAR 2.4	HH5292
<b>(# TURNS: 2.5 or 3.0)</b>	TRADITIONAL TILT HELM		SEASTAR 2.4	HH5742
<b>(# TURNS: 2.5 or 3.0)</b>	REAR MOUNT HELM		SEASTAR 2.4	HH5262
<b>(# TURNS: 1.8-3.5 or 2.1-4.25)</b>	SEASTAR CAPILANO HELM		CAPILANO 1250V	HH5250*

\* Capilano helms require use of Dexron II® ATF. All other SeaStar helms use Seastar oil.