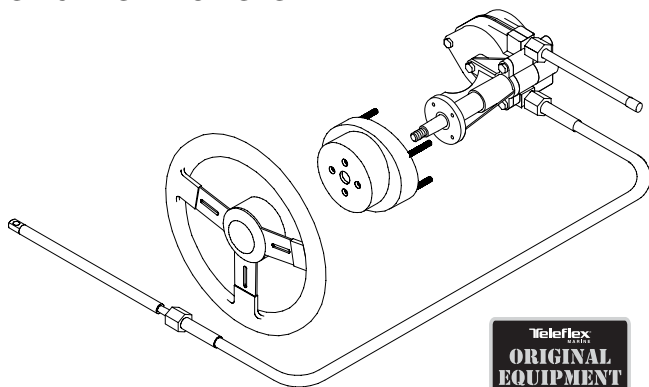


Big-T[®] inboard steering

Teleflex[®] MARINE

BIG-T[®] SINGLE STATION SYSTEM



(Steering Wheel
not included.)

Big-T[®]

Single Station System

(3 turns lock-to-lock)

**NEW VERSIONS OF TILT
COMING SOON!
(Contact Teleflex Marine
for Details.)**

NOTE: When properly installed, this steering system will connect to engines with ABYC standard tilt tubes, using engine manufacturer's link arm. For other engines, see Steering Connection Kits section for options.

The Original Teleflex Steering System!
For over 35 years, Big-T[®] has been the most durable, versatile mechanical steering system made, with both single and dual station capability. The heavy duty helm incorporates a strong steel pinion, dual diecast gears and meaty shaft bearing supports, all encased in a rugged gear housing. It's no wonder owners of small inboards have counted on the Teleflex Big-T since 1963!

Applications:

Inboards to 34 feet with one engine. Also suitable for stern drive boats with power-assisted steering. Big-T systems accept steering wheels up to 20" diameter.

The type of system shown on these pages is for single station use. For dual station Big-T, please see the next two pages.

Tilt[™]
STEERING
available!

Features:

- Available in single or dual station versions. (See next two pages for dual station version.)
- Responsive 3 turns from lock-to-lock.†
- Standard 3/4" round tapered steering shaft.
- Stainless steel cable output ends.
- 2-piece bezel for 90° or 20° helm mount to dash.
- Optional 1-piece 90° bezel for compact mounting.
- Uses Teleflex SSC72 type cable.‡
- Meets A.B.Y.C. standards.
- Meets N.M.M.A. certification requirements.

† 3.0 turns when all of standard steering cable travel is utilized.

‡ Dual station requires purchase of special cable. See following pages for Big-T dual station steering.

Complete Systems:

This steering system is sold by components. Select helm, bezel and cable or Tilt helm, Tilt Mechanism and cable from items listed below.

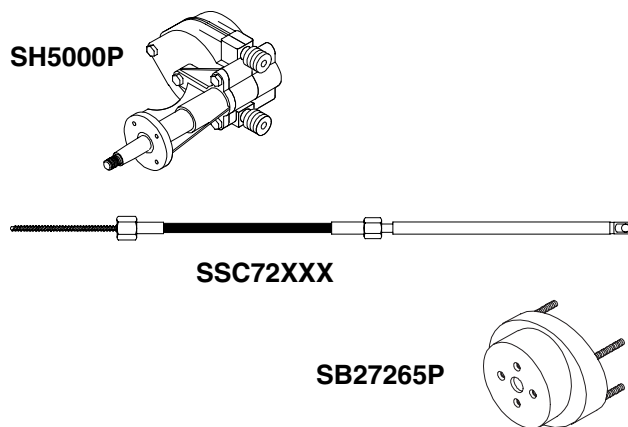
Big-T®

Components:

Big-T Helm (single station push-pull)...SH5000P

Big-T Cable (single station push-pull). SSC72XX
(XX = cable length in feet. A 14' SSC72 would be SSC7214.)

Bezel 2-pc. Black (90°/20° mount)SB27265P



Options:

Big-T Tilt Helm SH91525P*
* Requires SH91500 tilt mechanism to complete Tilt Steering system installation.

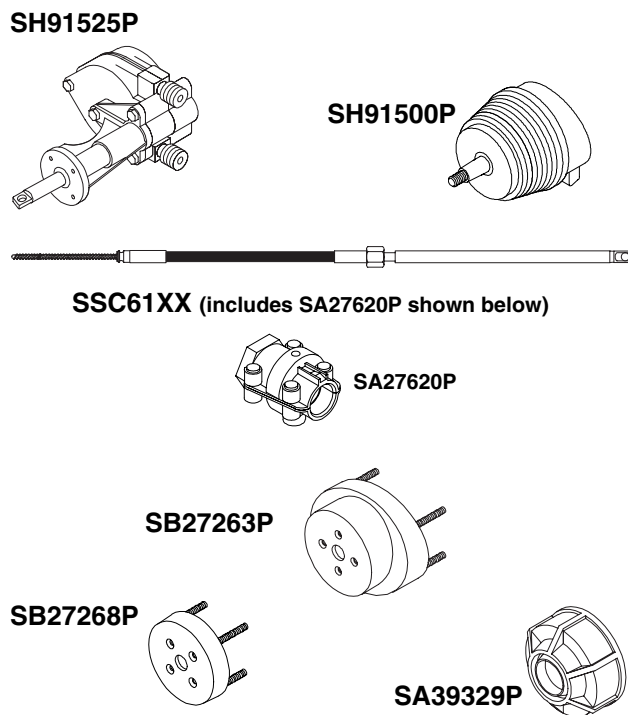
Performance Tilt MechanismSH91500P

QC II Cable (single station push-pull). SSC61XX

Bezel 2-pc. White (90°/20° mount)SB27263P

Bezel 1-pc. Chrome (90° mount)SB27268P

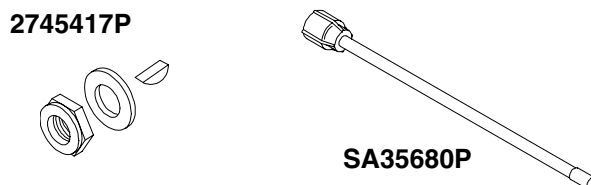
Cable Gard (fits most tilt tubes)SA39329P



Service Items:

Steering Wheel Hardware Kit2745417P

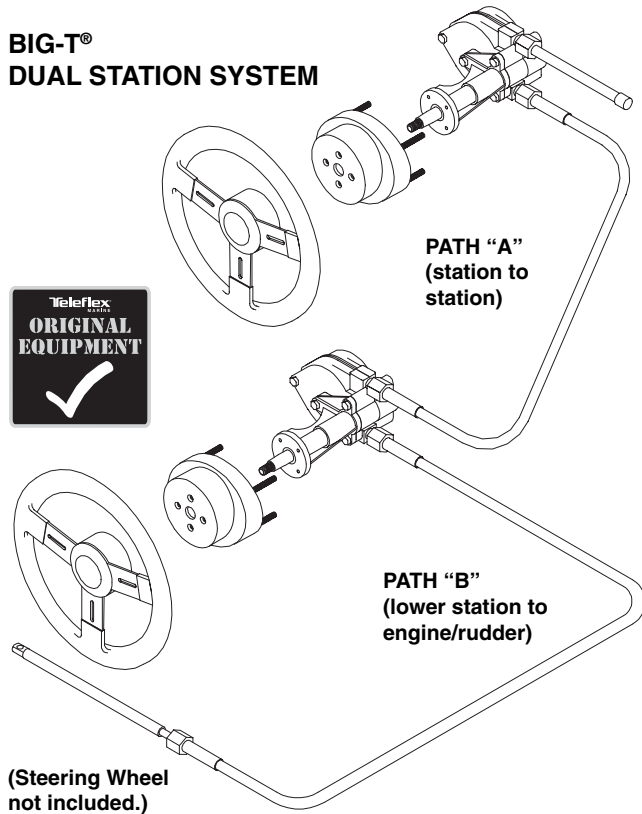
Spent Travel Tube (Big-T)SA35680P



Big-T[®] inboard steering

Teleflex[®] MARINE

BIG-T[®] DUAL STATION SYSTEM



Big-T[®]

Dual Station System (3 turns lock-to-lock)

**NEW VERSIONS OF TILT
COMING SOON!
(Contact Teleflex Marine
for Details.)**

NOTE: When properly installed, this steering system will connect to engines with ABYC standard tilt tubes, using engine manufacturer's link arm. For other engines, see Steering Connection Kits section for options.

The Original Teleflex Steering System!
For over 35 years, Big-T[®] has been the most durable, versatile mechanical steering system made, with both single and dual station capability. The heavy duty helm incorporates a strong steel pinion, dual diecast gears and meaty shaft bearing supports, all encased in a rugged gear housing. It's no wonder owners of small inboards have counted on the Teleflex Big-T since 1963!

Applications:

Inboards to 34 feet with one or two engines. Also suitable for stern drive boats with power-assisted steering. Big-T systems accept steering wheels up to 20" diameter.

The type of system shown on these pages is for dual station use.

For single station Big-T, please see the previous two pages.

Tilt[™]
STEERING
available!

Features:

- Available in single or dual station versions. (See previous two pages for single station version.)
- Responsive 3 turns from lock-to-lock.†
- Standard 3/4" round tapered steering shaft.
- Stainless steel cable output ends.
- 2-piece bezel for 90° or 20° helm mount to dash.
- Optional 1-piece 90° bezel for compact mounting.
- Uses a **special-order, non-returnable** type SSC81AxxBxx cable. See next page.‡
- Meets A.B.Y.C. standards.
- Meets N.M.M.A. certification requirements.

† 3.0 turns when all of standard steering cable travel is utilized.

‡ Dual station requires purchase of special cable. See preceding pages for Big-T single station steering.

Complete Systems:

This steering system is sold by components. Select helm, bezel and cable or Tilt helm, Tilt Mechanism and cable from items listed below.

Components:

Big-T Helm (dual station push-pull)SH5000P
 Big-T Cable (dual station).....SSC81AxxBxx
 (This is a special-order cable and is not returnable; xx = length in feet.)
 Bezel 2-pc. Black (90°/20° mount)SB27265P

Options:

Big-T Tilt HelmSH91525P*
 * Requires SH91500 tilt mechanism to complete Tilt Steering system installation.
 Performance Tilt MechanismSH91500P
 Bezel 2-pc. White (90°/20° mount)SB27263P
 Bezel 1-pc. Chrome (90° mount)SB27268P
 Cable Gard (fits most tilt tubes)SA39329P

Service Items:

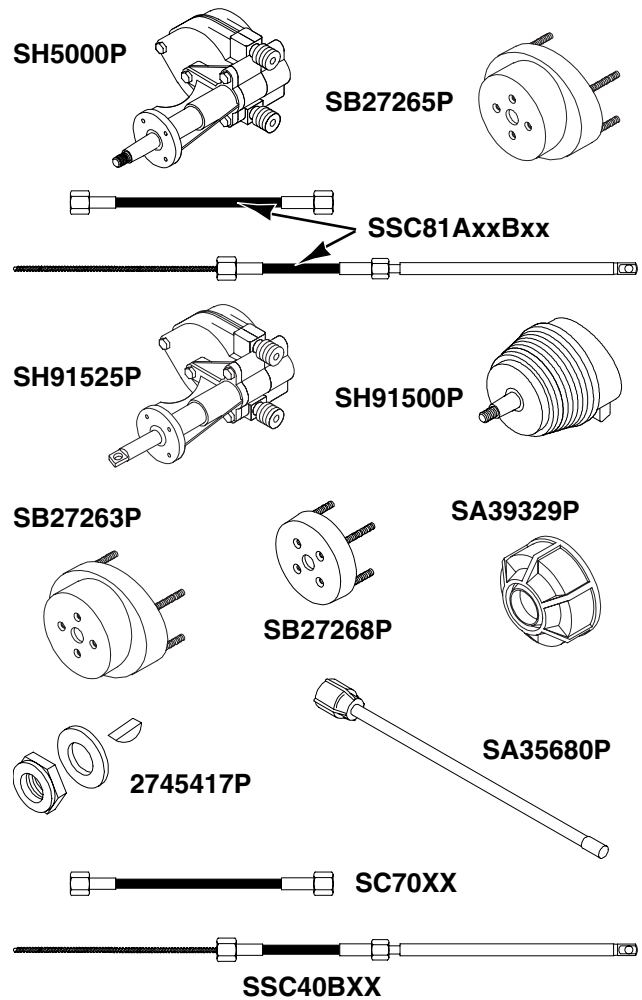
Steering Wheel Hardware Kit2745417P
 Spent Travel Tube (Big-T)SA35680P
 Dual Station Conduit (Path "A")SC70XX*
 Dual Station Cable (Path "B")SSC40BXX*
 * SC70 & SSC40 are both special-order cables and are not returnable; XX = length in feet. Combined, these are an SSC81.

How To Measure Cable for Dual Station Big-T:

For a Big-T dual station steering system, the cable required is SSC81AxxBxx (see parts list above), where xx = the lengths of the two cable sections in feet. The letter "A" in the part number represents the cable routing path distance between steering stations. The letter "B" represents the cable routing path distance from the lower station to the engine/rudder area. The different cable lengths are available in one-foot increments only.

EXAMPLE: if the cable routing from engine to lower station is 18 feet and 10 feet from station to station, order part number SSC81A10B18 cable.

NOTE: Please be sure of your measurements because this cable is non-returnable.



CABLE MEASUREMENT: DUAL STATION

PATH "A": CENTER LINE OF UPPER STATION WHEEL TO CENTER LINE OF LOWER STATION WHEEL.

PATH "B": CENTER LINE OF LOWER STATION WHEEL TO CABLE CONNECTION AT CENTERED TILLER.

CENTERLINE OF BOAT OR CENTERED TILLER