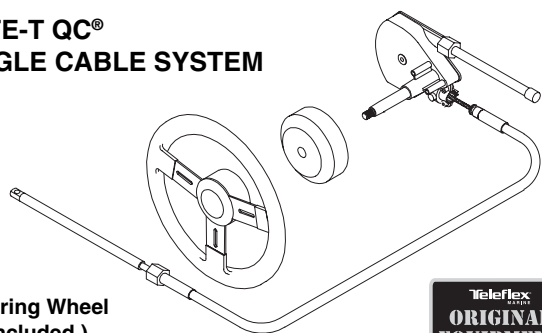


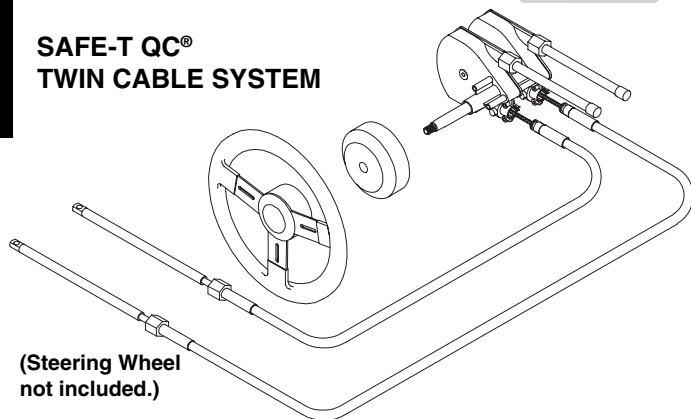
# Safe-T® QC sterndrive steering

## Teleflex® MARINE

### SAFE-T QC® SINGLE CABLE SYSTEM



### SAFE-T QC® TWIN CABLE SYSTEM



*(3 turns lock-to-lock)*

**NEW VERSIONS OF TILT  
COMING SOON!  
(Contact Teleflex Marine  
for Details.)**

**NOTE:** When properly installed, this steering system will connect to engines with ABYC standard tilt tubes, using engine manufacturer's link arm. For other engines, see Steering Connection Kits section for options.

**Traditional Teleflex Marine mechanical steering is still the choice for stern drives, inboards and other power assisted applications.**

*It's just right for power steered boats in which No FeedBack™ systems are not required.*

*Safe-T® QC offers the quick response of three-turn steering, and easy installation with a patented, no-tools-required cable connection at the helm.*

## Applications:

Virtually all power-assisted stern drive boats with wheels up to 16" diameter. Safe-T QC® replaces all Teleflex Safe-T helms made since 1968 with little or no dash modifications. (Requires use of SSC62 QC steering cable.)

For single station use only. Safe-T QC accepts wheels up to 16" diameter.

*Components are available for dual cable systems, but we recommend No-FeedBack steering for all dual cable steered, non-power-assisted outboards and stern drives. See the NFB 4.2 Dual Cable and SeaStar PRO sections of this catalog.*



## Features:

- Quick-response of 3 turns lock-to-lock.
- Kits include: cable, helm, 90° bezel and hardware.
- Standard 3/4" round tapered steering shaft.
- Stainless steel cable output ends.
- Fast, easy installation: uses simple snap-in cable connection, Teleflex Quick Connect (QC) cable, and industry-standard Safe-T mounting hardware.
- Meets A.B.Y.C. standards.
- Meets N.M.M.A. certification requirements.

mech. rotary steering, most boats with power-assist steering

## Complete System:

Safe-T QC Steering Kit (single cable) SS137XX

(Kits available with steering cable lengths from 8-23 feet. If either a longer or shorter cable is required, please order your system by components, which are listed below.)

(Twin cable Safe-T QC systems are sold as service components; see listing below for helm, bezel and cable numbers. If replacing "TS" type threaded spigot twin helm, the cables connected to that helm **MUST** be replaced — they will **NOT** connect to new helm.)

## Components:

Safe-T QC Single Helm .....SH5094P

QC Cable .....SSC62XX  
(XX = cable length in feet. A 14' SSC62 would be SSC6214.)

Safe-T QC Bezel (90°).....SB27484P

## Options:

Safe-T QC Sgl. Tilt Dash Module .... SH1535094  
*Includes tilt helm and mechanism. Easy way to upgrade to Tilt or replace older Tilt systems. Requires SSC61 or SSC62 cable.*

Performance Tilt Mechanism .....SH91500P

Safe-T QC Single Tilt Helm ..... SH91523P\*  
*\* Requires SH91500 tilt mechanism to complete Tilt Steering system installation.*

Safe-T QC Bezel (20°).....SB27483P  
Cable Gard (fits most tilt tubes) ..... SA39329P

## Service Items:

Safe-T Cable (with helm nut) .....SSC72XX

QC II Cable (Safe-T QC or "TS") .....SSC61XX

QC II Threaded Helm Converter.....SA27620P

Steering Wheel Hardware Kit .....2745417P

Spent Travel Tube .....SA35680P

Hitch Pin for Quick Connect Helms ....2724514P

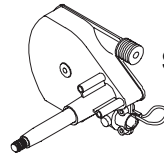
Safe-T "TS" helm .....SH5023P  
*(This is the old style helm with two threaded spigots. Requires SSC72XX or SSC61XX cable, NOT SSC62XX cable.)*

Safe-T QC Dual Helm.....SH5294P†

Safe-T QC Dual Tilt Helm ..... SH91524P\*†  
*\* Requires SH91500 tilt mechanism to complete Tilt Steering system installation.*

† For dual cable steered stern drives. If steering is **NOT** power-assisted, upgrading to NFB 4.2 Dual Cable is recommended.

### SAFE-T QC SINGLE CABLE STEERING KIT



SH5094P



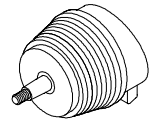
SB27484P



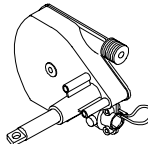
SSC62XX



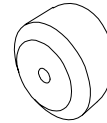
SH1535094  
TILT DASH  
MODULE



SH91500P



SH91523P



SB27483P



SA39329P



SSC72XX



SSC61XX (includes SA27620P shown below)



SA27620P

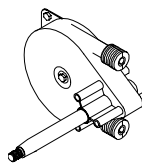
2724514P



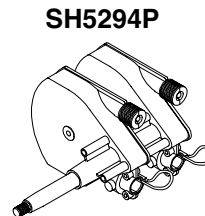
2745417P



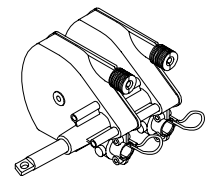
SA35680P



SH5023P



SH5294P



SH91524P

