

Morse CH4400 series controls

Morse®

*(single-function control
— each lever controls
throttle OR shift)*



This stylish, low profile top mount control features twin levers/single action with visual and tactile throttle/shift identification. Available in chrome or satin black, with straight or raked handles and smooth or ratchet-type friction, it can be used for single or twin stations. CH4400s accept 3300/33C type control cables and are ideal drop-in replacements for older Teleflex CH4500/4800 units. Additional hardware is required for twin station use.

(accepts these cables:)

OEM/Univ. 3300/33C Types



Universal 3300/33C Types



Applications:

For single or dual station applications with single or twin engines (one control per engine per station utilizing an optional neutral safety switch kit). Uses 3300/33C type universal control cables. *Not suitable for use with Mercury® and OMC® OEM type control cables.*

Features:

- Dual lever, single action for throttle & shift.
- Dual station capability.
- Stylish look with either straight or raked handles.
- Positive detent for shifts.
- Push or Pull to operate throttle and/or shift.
- Includes hardware for two 3300/33 control cables.
- Optional neutral safety switch.
- Adjustable traditional resistance feel or ratchet action for precise throttle operation.
- Removable knobs for recessed mounting.
- Meets/exceeds all applicable industry standards.

NOTE: *When properly installed, these engine controls will connect to outboard, stern drive and inboard engines, utilizing universal 3300/33C type cables and engine connection kits. (These controls are not designed to use Mercury/Mariner® and OMC® OEM type control cables that have “eye” terminals at the control end of the cable.)*

(May require purchase of cable connection kit(s) to complete control system installation.)

mechanical control, most engines, single & dual stations

Engine Controls:

ITEM DESCRIPTION	FINISH	HANDLES	FRICTION	PART #	NOTES
CH4400 CHROME:					
CH4451	Chrome	Straight	Smooth	CH4451P	Throttle Friction/Shift Detent
CH4452	Chrome	Straight	Ratcheting	CH4452P	Throttle Friction/Shift Detent
CH4481	Chrome	Raked	Smooth	CH4481P	Throttle Friction/Shift Detent
CH4482	Chrome	Raked	Ratcheting	CH4482P	Throttle Friction/Shift Detent
CH4400 BLACK:					
CH4453	Chrome	Straight	Smooth	CH4453P	Throttle Friction/Shift Detent
CH4454	Chrome	Straight	Ratcheting	CH4454P	Throttle Friction/Shift Detent
CH4483	Chrome	Raked	Smooth	CH4483P	Throttle Friction/Shift Detent
CH4484	Chrome	Raked	Ratcheting	CH4484P	Throttle Friction/Shift Detent
NOTES:					
The adjustable smooth (resistance type) and ratcheting friction features are for use with throttle control only. Use detents without friction for shift. If application is twin station, use detents on lower station only.					
QUESTIONS? CALL TECH SUPPORT AT 610-495-7011, EXT. 2.					

CH4451P/
CH4452P



CH4481P/
CH4482P



EASY ACCESS
COVER PLATE
(for lever friction
adjustment)

CH4453P/
CH4454P



CH4483P/
CH4484P



Options/Service Items:

Optional Neutral Safety Switch.....CA68075P

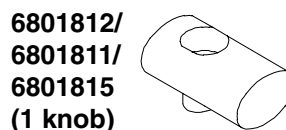
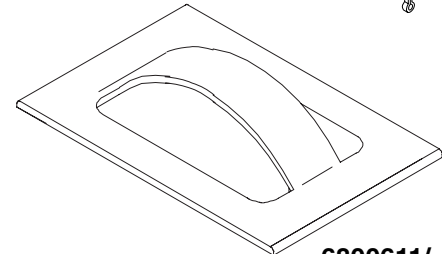
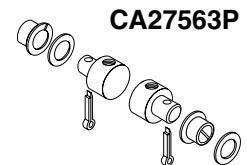
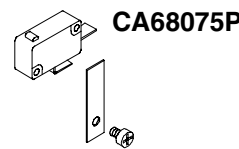
3300 Heavy Duty Brass Pivot Kit (2) .CA27563P

CH4400 Dual Station Hardware Kit...CA68065P
This kit is for use with 3300/33C type universal cables only.

CH4400 Hardware Kit.....CA68057P

CH4400 Cover (Black Plastic) 6800611
CH4400 Cover (Stainless Steel)..... 6800618

CH4400 Knob (Chrome Zinc Alloy) 6801812
CH4400 Knob (Black Aluminum) 6801811
CH4400 Knob (Red Aluminum) 6801815
CH4400 Screw for Knob..... 6801918
CH4400 Black Knob Cap (Shift)..... 6802215
CH4400 Red Knob Cap (Throttle)6802111



6800611/
6800618



6802215



6802111

CONTROLS single function