

Morse CH5600 SLT control

Morse®

*(single-function control
— each lever controls
throttle OR shift)*



premium
engine control

(accepts these cables:)

OEM/Univ. 3300/33C Types



Universal 3300/33C Types



NOTE: When properly installed, these engine controls will connect to outboard, stern drive and inboard engines, utilizing universal 3300/33C type cables and engine connection kits. (These controls are not designed to use Mercury/Mariner® and OMC® OEM type control cables that have “eye” terminals at the control end of the cable.)

(May require purchase of cable connection kit(s) to complete control system installation.)

The CH5600 SLT is a drop-in replacement for Morse® Twin SR controls.

There's nothing else like it! Patented **Self Locking Throttle** technology makes the SLT the only control that stops cable creep and works flawlessly in single or multi-station applications. SLT stops unwanted control cable movement without the need for cable brakes or other friction devices that cause poor feel at the lever and negate the performance advantages of TFXTRIME® cables. Additional hardware is required for twin station use.

Applications:

For single or dual stations with single or twin engines (one control per engine per station utilizing an optional neutral safety switch kit).

Uses 3300/33C type universal control cables.

Not suitable for use with Mercury® and OMC® OEM type control cables.

Features:

- Patented SLT technology prevents throttle creep. Lever stays where it is placed.
- Superior twin station performance.
- Polished Stainless Steel levers & dome.
- Positive detent for shifts.
- Can be user-configured as either Push or Pull to operate throttle and/or shift.
- Includes hardware for two 3300/33C type universal control cables.
- Easy-access adjustable shift detents/lever stops (under easily removable dome).
- Optional neutral safety switch.
- Meets/exceeds all applicable industry standards.

mechanical control, most engines, single & dual stations

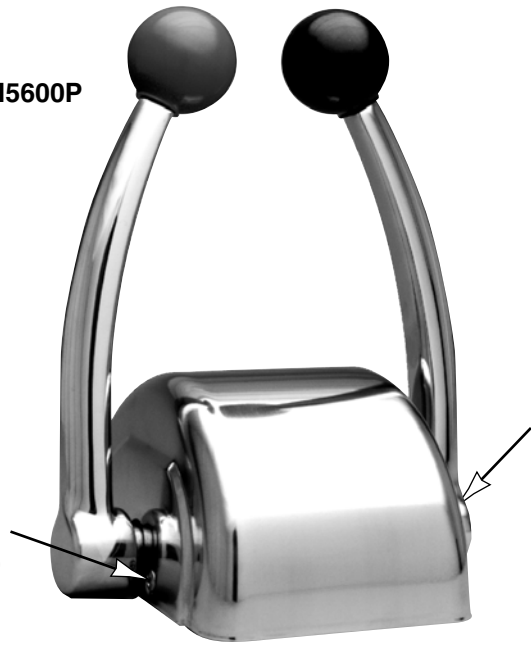
Engine Control:

SLT Top Mount Control..... CH5600P

CH5600P

Use **TFXTREME**
Cables With This
Control

EASY ACCESS
UNDER DOME
(remove screw
near each lever)

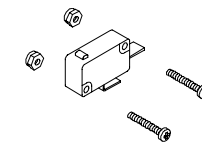


Options/Service Items:

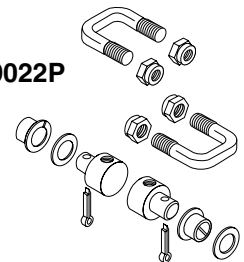
Optional Neutral Safety Switch.....CA69009P

CA69009P

Cable Attachment Kit
(3300/33C Dual Station).....CA69022P

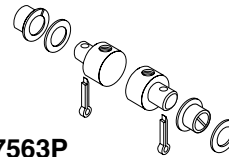


CA69022P



3300/33C Heavy Duty
Brass Pivot Kit (2).....CA27563P

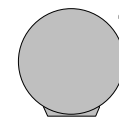
CA27563P



Replacement Red Knob 4009912

4009912

Replacement Black Knob 4009819



4009819



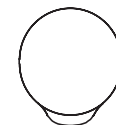
Stainless Steel Throttle Knob
(grooved).....CA69052P**

CA69052P



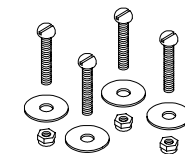
Stainless Steel Shift Knob
(smooth).....CA69051P**

CA69051P



** Fits most controls with 3/8-24 threaded levers.

CH5600 Mounting Hardware Kit.....CA69013P
(Includes control mounting hardware.)

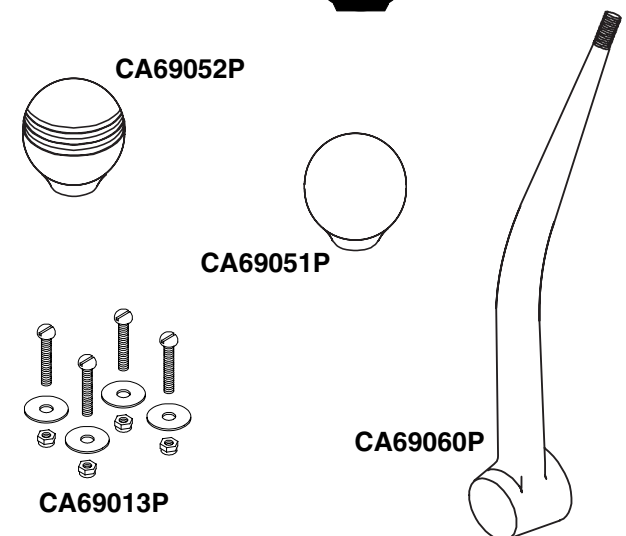


CA69013P

(For replacement detent balls and springs, order CA68057P
Hardware Kit for the CH4400 control.)

Replacement Stainless Steel Lever...CA69060P
(Fits Teleflex® CH5600 SLT and Morse® Twin SR controls only.)

CA69060P



Connection Kits .. (see Connection Kits section)

CONTROLS single function